



BARRIER FREE

STUDIO UNDERCOUNTER SINK

- Vitreous china
- Rectangular undercounter mount sink
- Unglazed rim
- Front overflow
- Supplied with mounting kit (047194-0070A) and template

0614.000 Unglazed rim
21-1/4" x 15-1/4" (540 x 387mm)

Bowl size:
18-1/4" (464mm) wide,
12-1/8" (308mm) front to back,
6-3/4" (171mm) deep

0618.000 Unglazed rim
23-5/8" x 16-5/8" (600 x 422mm)

Bowl size:
21-1/8" (537mm) wide,
14" (356mm) front to back,
6" (152mm) deep

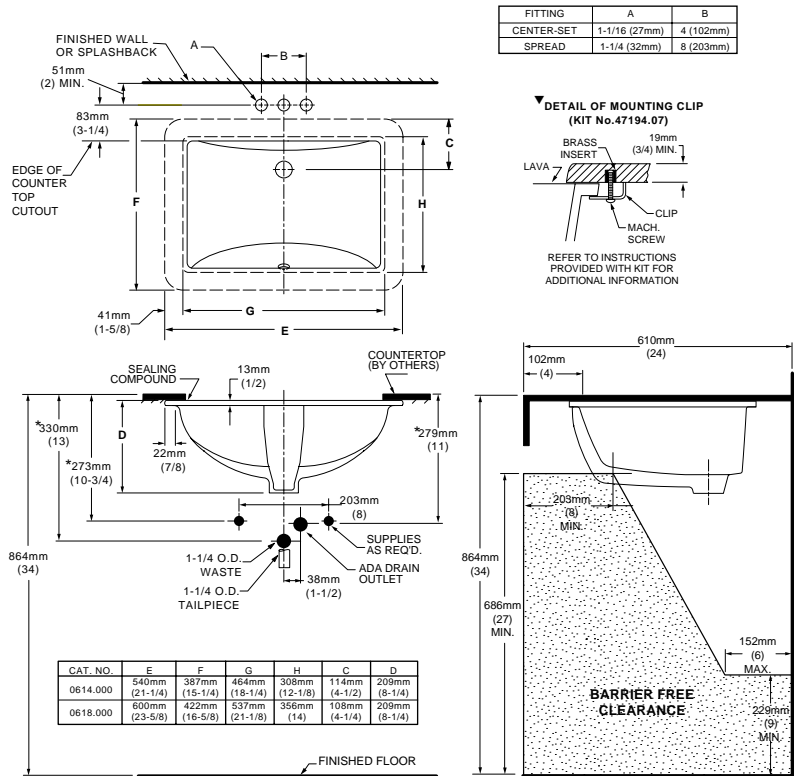
**Compliance Certifications -
Meets or Exceeds the Following Specifications:**

- ASME A112.19.2M for Vitreous China Fixtures
- CAN/CSA B45 series

To Be Specified

- Color:
- Faucet*:
- Faucet Finish:
- Supplies:
- 1-1/4" Trap:
- Nipple:

* See faucet section for additional models available



NOTES:
WE RECOMMEND USING BASIN AS A TEMPLATE TO DETERMINE PROPER CONTOUR. CUT COUNTERTOP 38MM (1-1/2") INSIDE BASIN CONTOUR. FITTINGS NOT INCLUDED AND MUST BE ORDERED SEPARATELY. * DIMENSIONS SHOWN FOR LOCATION OF SUPPLIED AND "P" TRAP ARE SUGGESTED. ▼ UNDERCOUNTER MOUNTING KIT SUPPLIED WITH SINK. IMPORTANT: Dimensions of fixtures are nominal and may vary within the range of tolerances established by ANSI Standard A112.19.2. These measurements are subject to change or cancellation. No responsibility is assumed for use of superseded or voided pages.